

POLYSCREEN®



Pass - Class 1



GREENGUARD



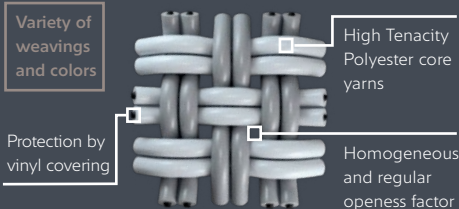
POLYSCREEN® 501



BANDALUX

BANDALUX

POLYSCREEN® 501



EFICACIA TÉRMICA Y VISUAL CON TEXTURA REFINADA

- Excelente protección térmica: gestión de hasta el 92% de energía solar ($G_{tote} = 0.08 - G_{toti} = 0.32$).
- Transparencia y visibilidad: 1% de apertura homogénea.
- Filtrado de la luz muy eficaz: 96% de la luz bloqueada (TV = 4%).
- Rendimiento energético: contribuye al ahorro energético en calefacción y aire acondicionado.
- Contribuye al confort acústico: α_w : 0,45.
- Tejido sostenible, respetuoso con la salud y el medio ambiente, 100% reciclable.
- Calidad del aire: inoloro, no desprende COV (certificado Greenguard Gold).
- Enrolle perfecto incluso para grandes dimensiones (ancho 250cm).
- Resistencia a condiciones meteorológicas extremas (IMO) y al cloro.

EFFICACITÉ THERMIQUE ET VISUELLE D'UN TEXTILE RAFFINÉ

- Protection thermique renforcée : jusqu'à 92 % de l'énergie solaire maîtrisée ($G_{tote} = 0.08 - G_{toti} = 0.32$).
- Transparence et visibilité : 1 % d'ouverture homogène.
- Filtre lumineux très efficace : 96 % de la lumière stoppée (TV = 4 %).
- Performances énergétiques : contribue aux économies de chauffage et de climatisation.
- Contribue au confort acoustique : α_w : 0,45.
- Tissu éco-conçu, respectueux de la santé et de l'environnement, 100 % recyclable.
- Qualité de l'air : sans odeur, il ne dégage pas de COV (certifié Greenguard Gold).
- Excellent enroulement même en grandes dimensions (largeur 250 cm).
- Résiste aux conditions météorologiques en milieu les plus extrêmes (IMO), résistance au chlore.

THERMAL AND VISUAL EFFICIENCY WITH REFINED TEXTURE

- Excellent protection from the heat: manages up to 92% of the solar energy (both indoors and outdoors: $G_{tote} = 0,08 - G_{toti} = 0,32$).
- Transparency and visibility: 1% degree of opening, throughout the entire shade.
- Highly efficient sunlight filter: 96% of the light is blocked (TV = 4%).
- Energy efficiency: contributes to energy savings in heating and air conditioning.
- Contributes to acoustic comfort: α_w : 0,45.
- A sustainable, 100% recyclable, environmentally friendly and health-friendly fabric.
- Air quality: colorless, VOC emission free (Greenguard Gold certified).
- Perfect roll, even in large sizes (250cm in width).
- Resistant to extreme climate conditions (IMO) and chlorine.

EFFICACIA TERMICA E VISIVA CON TEXTURA RAFFINATA

- Eccellente protezione termica: gestione fino al 92% di energia solare ($G_{tote} = 0,08 - G_{toti} = 0,32$).
- Trasparenza e visibilità: 1% di apertura omogenea.
- Filtraggio della luce molto efficace: 96% della luce bloccata (TV = 4%).
- Rendimento energetico: contribuisce al risparmio energetico nel riscaldamento e nell'aria condizionata.
- Contribuisce al comfort acustico: α_w : 0,45.
- Tessuto sostenibile, rispettoso della salute e dell'ambiente, 100% riciclabile.
- Qualità dell'aria: inodore, non rilascia COV (certificato Greenguard Gold).
- Avvolgimento perfetto anche per grandi dimensioni (larghezza 250cm).
- Resistenza a condizioni meteorologiche estreme (IMO) e al cloro.

PROPERTIES



MAINTENANCE



CERTIFICATES

FABRICS CERTIFICATES



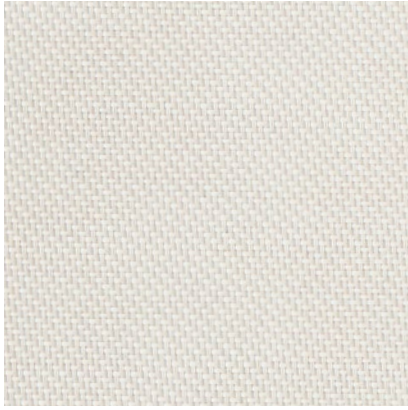
COMPANY & SYSTEMS CERTIFICATES



Contributing to Ecofriendly Building



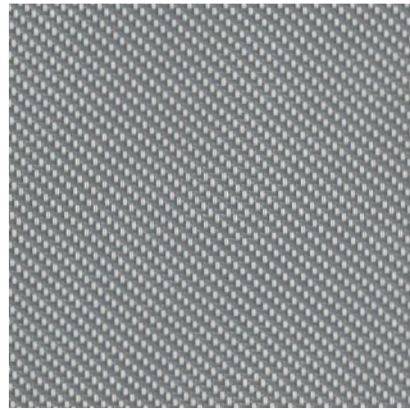
FIND MORE AT — contract.bandalux.com



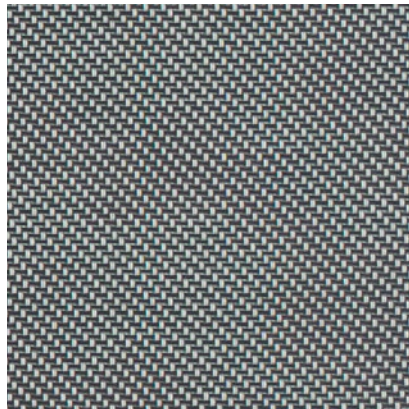
White
Ref. 36002



Pearl
Ref. 36007



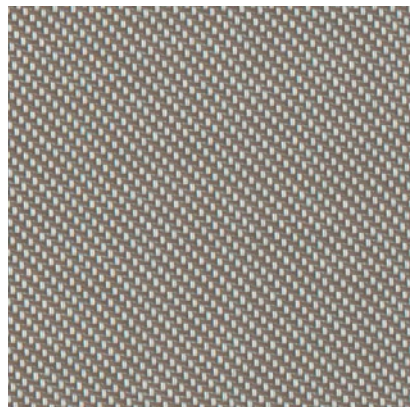
Grey
Ref. 36001



Ebony
Ref. 36080



Linen
Ref. 36020



Moka
Ref. 36050



OF 1%

POLYSCREEN® 501

TECHNICAL DATA

Composición / Composition / Composition / Composizione	-	80% PVC + 20% PES
Peso / Poids / Weight / Peso	Internal method	500 g/m ² - 14,74 oz/yd ²
Espesor / Épaisseur / Thickness / Spessore	EN ISO 5084	0,67 mm - 0,026"
Ancho de rollo / Largeur rouleau Roll width / Larghezza del tessuto	-	250 cm - 98"
Grado de apertura / Coefficient d'ouverture Openess Factor / Grado di apertura (%)	-	1%
Absorción acústica / Absorption acoustique Sound absorption / Assorbimento acustico	EN ISO 10534:2	$\alpha_w=0,45$
Resistencia al fuego / Classement feu Fire classification / Resistenza al fuoco	EN 13773 NFPA 701	Class 1 Pass
Wheelmark	IMO Res.MSC.307(88) - (2010 FTP Code) IMO MSC/Circ. 1102	Pass
Resistencia al desgarro / Résistance à la déchirure Tear resistance / Resistenza alla trazione (daN)	EN ISO 13937-3	5,4 daN - 5,6 daN
Resistencia a la ruptura / Résistance rupture Tensile strength / Resistenza alla rottura (daN/5cm)	EN ISO 13934-1	184 daN - 141 daN
Resistencia a la luz / Résistance à la lumière Light Fastness / Resistenza alla luce (Grey Scale)	EN ISO 105 B06 (interior) EN ISO 105 B03 (exterior) EN ISO 105 B04 (exterior) EN ISO 4892-2 (exterior)	5/5 4/5 White
Resistencia a la luz / Résistance à la lumière Light Fastness / Resistenza alla luce (Blue Scale)	EN ISO 105 B02 (interior)	8/8 7/8 White
Test de olores / Test d'odeur / Odour test / Test degli odori	PV-3900	3 Pass
Resistencia en ambientes salinos Résistance aux environnements salins Durability in saline environment Resistenza in ambienti salini	EN ISO 112-017:92 ISO 9227:90	Sin cambios en la superficie (max.nivel) Aucun changement en surface (niveau max.) Whitout changes in surface (max. level) Senza cambi in superficie (nivele mass)
Actividad antimicrobiana / Activité antibacterienne Antimicrobial activity / Attività antimicrobica	ASTM 2180-01	Inhibe la proliferación de bacterias Pas de prolifération de bactérie Microorganism growth inhibition Impedisce la proliferazione dei batteri
Material reciclado / Matériaux recyclés Recycled material / Materiali riciclati	-	2% Pre-consumer

THERMAL FACTORS

OPTICAL FACTORS

Ref.	Colors	EN52022-1 (Standard C and D)						EN410 - EN14500 - EN14501								
		% Ts	% Rs (A)	% As	G _{TOT} int Glazing C		G _{TOT} int Glazing D		% Tv	% Rv	% Tv, n-n	% Tv, n-diff	Glare Control Class	Night Privacy Class	Visual Contact Class	Daylight Utilisation Class
					G _{TOT}	CLASS	G _{TOT}	CLASS								
36080	Ebony	4	46	50	0,42	1	0,27	2	3	55	1	2	4	2	2	1
36001	Grey	6	50	44	0,41	1	0,26	2	5	59	1	3	4	2	2	1
36020	Linen	17	68	15	0,32	2	0,23	2	13	77	1	12	1	2	1	2
36050	Moka	6	51	43	0,37	1	0,24	2	4	59	1	3	2	2	2	1
36007	Pearl	14	64	22	0,36	2	0,25	2	10	73	1	8,5	3	2	1	2
36002	White	17	72	12	0,34	2	0,25	2	14	82	1	13	2	2	1	2

The technical data above are average values with a +/- 5% tolerance. The values quoted above represent results of standards and internal tests performed and are provided for information only to enable to make the best use of our products. To ensure warranty effectiveness, refer to warranty certificate concerned available on demand. Our products are subjects to technical evolutions, we remain entitled to modify the characteristics of our products at any time. The buyer of our products is responsible for checking the validity of the above data.